

- 1 PIN
- 2 PAWLS
- 3 SPRING
- 4 KNOB
- 5 BUTTON
- 6 WORKING TEMPERATURE
- 7 FEATURES AND APPLICATIONS
- 8 ACCESSORIES
- 9
- 10 SPECIAL EXECUTIONS ON REQUEST
- 11 INSTRUCTIONS OF USE
- 12
- 13
- 14
- 15
- 16
- 17
- 18
- 19

PIN
AISI 303 stainless steel

PAWLS
Stainless Steel AISI 304

SPRING
AISI 301 stainless steel.

KNOB
Glass-fibre reinforced polyamide based (PA) technopolymer, black colour, provided with holes for security ring.

BUTTON
Polyamide based (PA) technopolymer, red colour, glossy finish.

WORKING TEMPERATURE
From -20°C to +80°C.

FEATURES AND APPLICATIONS
GN 114.3 stainless steel lock pins are generally used for quick fixation or connection of parts to be machined, in particular for elements which need to be removed and reset continuously.

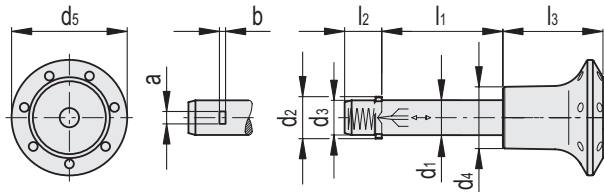
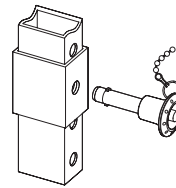
ACCESSORIES
To optimise the use of these lock pins, have been designed:
- ball chains GN 111 (see page 611);
- retaining cables GN 111.2 (see page 612);
- spiral retaining cables GN 111.4 (see page 613).

SPECIAL EXECUTIONS ON REQUEST
Other dimensions.

INSTRUCTIONS OF USE
By pressing the push button the two pawls are freed and the pin can be pulled-out or inserted.

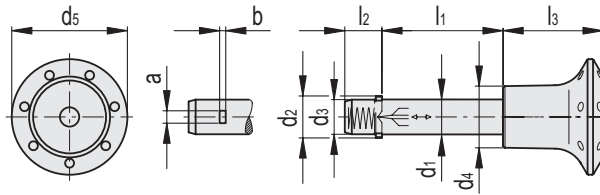


Application example



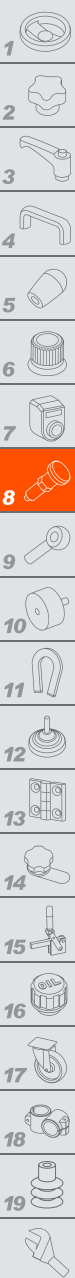
Conversion Table	
1 mm = 0.039 inch	
d1	
mm	inch
6	0.24
8	0.31
10	0.39
12	0.47
16	0.63

Code	Description	d1 -0.1	d2	d3	d4	d5	l1 +0.4	l2	l3	a	b	Double sided shearing	
												force [KN]	⚖
GN.38795	GN 114.3-6-10	6	7.3 +0.5	5.9	15	30	10	7	21	2.3	0.5	17	12
GN.78301	GN 114.3-6-12	6	7.3 +0.5	5.9	15	30	12	7	21	2.3	0.5	17	12
GN.38796	GN 114.3-6-16	6	7.3 +0.5	5.9	15	30	16	7	21	2.3	0.5	17	13
GN.38797	GN 114.3-6-20	6	7.3 +0.5	5.9	15	30	20	7	21	2.3	0.5	17	14
GN.38798	GN 114.3-6-25	6	7.3 +0.5	5.9	15	30	25	7	21	2.3	0.5	17	14
GN.38799	GN 114.3-6-30	6	7.3 +0.5	5.9	15	30	30	7	21	2.3	0.5	17	15
GN.78302	GN 114.3-6-35	6	7.3 +0.5	5.9	15	30	35	7	21	2.3	0.5	17	16
GN.38800	GN 114.3-6-40	6	7.3 +0.5	5.9	15	30	40	7	21	2.3	0.5	17	17
GN.78303	GN 114.3-6-45	6	7.3 +0.5	5.9	15	30	45	7	21	2.3	0.5	17	18
GN.78304	GN 114.3-6-50	6	7.3 +0.5	5.9	15	30	50	7	21	2.3	0.5	17	18
GN.78305	GN 114.3-6-60	6	7.3 +0.5	5.9	15	30	60	7	21	2.3	0.5	17	23
GN.78306	GN 114.3-6-70	6	7.3 +0.5	5.9	15	30	70	7	21	2.3	0.5	17	23
GN.78307	GN 114.3-6-80	6	7.3 +0.5	5.9	15	30	80	7	21	2.3	0.5	17	27
GN.78311	GN 114.3-8-10	8	9.8 +0.5	7.9	15	30	10	8.4	21	2.8	0.6	35	26
GN.78312	GN 114.3-8-16	8	9.8 +0.5	7.9	15	30	16	8.4	21	2.8	0.6	35	29
GN.38755	GN 114.3-8-30	8	9.8 +0.5	7.9	15	30	30	8.4	21	2.8	0.6	35	29
GN.78313	GN 114.3-8-35	8	9.8 +0.5	7.9	15	30	35	8.4	21	2.8	0.6	35	29
GN.38757	GN 114.3-8-40	8	9.8 +0.5	7.9	15	30	40	8.4	21	2.8	0.6	35	32
GN.78314	GN 114.3-8-45	8	9.8 +0.5	7.9	15	30	45	8.4	21	2.8	0.6	35	34
GN.38759	GN 114.3-8-50	8	9.8 +0.5	7.9	15	30	50	8.4	21	2.8	0.6	35	35
GN.78315	GN 114.3-8-60	8	9.8 +0.5	7.9	15	30	60	8.4	21	2.8	0.6	35	41
GN.78316	GN 114.3-8-70	8	9.8 +0.5	7.9	15	30	70	8.4	21	2.8	0.6	35	47
GN.78317	GN 114.3-8-80	8	9.8 +0.5	7.9	15	30	80	8.4	21	2.8	0.6	35	50
GN.78318	GN 114.3-8-90	8	9.8 +0.5	7.9	15	30	90	8.4	21	2.8	0.6	35	52
GN.78319	GN 114.3-8-100	8	9.8 +0.5	7.9	15	30	100	8.4	21	2.8	0.6	35	54



INOX STAINLESS STEEL METRIC

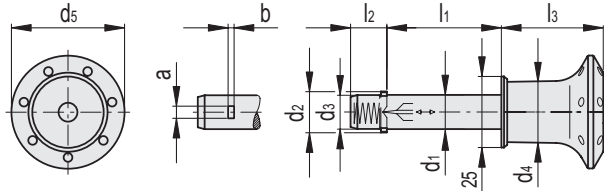
Code	Description	d1 -0.1	d2	d3	d4	d5	l1 +0.4	l2	l3	a	b	Double sided shearing force [KN]	
GN.78321	GN 114.3-10-15	10	11.7 +1	9.9	18	34	15	9.8	26	3.3	1	47	24
GN.38761	GN 114.3-10-20	10	11.7 +1	9.9	18	34	20	9.8	26	3.3	1	47	26
GN.38763	GN 114.3-10-25	10	11.7 +1	9.9	18	34	25	9.8	26	3.3	1	47	28
GN.38765	GN 114.3-10-30	10	11.7 +1	9.9	18	34	30	9.8	26	3.3	1	47	31
GN.78322	GN 114.3-10-35	10	11.7 +1	9.9	18	34	35	9.8	26	3.3	1	47	33
GN.38767	GN 114.3-10-40	10	11.7 +1	9.9	18	34	40	9.8	26	3.3	1	47	35
GN.78323	GN 114.3-10-45	10	11.7 +1	9.9	18	34	45	9.8	26	3.3	1	47	37
GN.38769	GN 114.3-10-50	10	11.7 +1	9.9	18	34	50	9.8	26	3.3	1	47	39
GN.78324	GN 114.3-10-60	10	11.7 +1	9.9	18	34	60	9.8	26	3.3	1	47	44
GN.78325	GN 114.3-10-70	10	11.7 +1	9.9	18	34	70	9.8	26	3.3	1	47	49
GN.78326	GN 114.3-10-80	10	11.7 +1	9.9	18	34	80	9.8	26	3.3	1	47	54
GN.78327	GN 114.3-10-90	10	11.7 +1	9.9	18	34	90	9.8	26	3.3	1	47	60
GN.78328	GN 114.3-10-100	10	11.7 +1	9.9	18	34	100	9.8	26	3.3	1	47	63
GN.78329	GN 114.3-10-110	10	11.7 +1	9.9	18	34	110	9.8	26	3.3	1	47	67
GN.78330	GN 114.3-10-120	10	11.7 +1	9.9	18	34	120	9.8	26	3.3	1	47	73
GN.78341	GN 114.3-12-20	12	13.7 +1	11.9	18	34	20	11.3	26	3.8	1	75	33
GN.38771	GN 114.3-12-25	12	13.7 +1	11.9	18	34	25	11.3	26	3.8	1	75	37
GN.38773	GN 114.3-12-30	12	13.7 +1	11.9	18	34	30	11.3	26	3.8	1	75	41
GN.78342	GN 114.3-12-35	12	13.7 +1	11.9	18	34	35	11.3	26	3.8	1	75	44
GN.38775	GN 114.3-12-40	12	13.7 +1	11.9	18	34	40	11.3	26	3.8	1	75	48
GN.78343	GN 114.3-12-45	12	13.7 +1	11.9	18	34	45	11.3	26	3.8	1	75	51
GN.38777	GN 114.3-12-50	12	13.7 +1	11.9	18	34	50	11.3	26	3.8	1	75	55
GN.38779	GN 114.3-12-60	12	13.7 +1	11.9	18	34	60	11.3	26	3.8	1	75	62
GN.78344	GN 114.3-12-70	12	13.7 +1	11.9	18	34	70	11.3	26	3.8	1	75	69
GN.78345	GN 114.3-12-80	12	13.7 +1	11.9	18	34	80	11.3	26	3.8	1	75	76
GN.78346	GN 114.3-12-90	12	13.7 +1	11.9	18	34	90	11.3	26	3.8	1	75	90
GN.78347	GN 114.3-12-100	12	13.7 +1	11.9	18	34	100	11.3	26	3.8	1	75	95
GN.78348	GN 114.3-12-110	12	13.7 +1	11.9	18	34	110	11.3	26	3.8	1	75	102
GN.78349	GN 114.3-12-120	12	13.7 +1	11.9	18	34	120	11.3	26	3.8	1	75	112
GN.38781	GN 114.3-16-30	16	18.7 +1	15.9	22	40	30	14.2	32	4.8	1.2	138	78
GN.38782	GN 114.3-16-35	16	18.7 +1	15.9	22	40	35	14.2	32	4.8	1.2	138	85
GN.38783	GN 114.3-16-40	16	18.7 +1	15.9	22	40	40	14.2	32	4.8	1.2	138	92
GN.78351	GN 114.3-16-45	16	18.7 +1	15.9	22	40	45	14.2	32	4.8	1.2	138	85
GN.38785	GN 114.3-16-50	16	18.7 +1	15.9	22	40	50	14.2	32	4.8	1.2	138	105
GN.38787	GN 114.3-16-60	16	18.7 +1	15.9	22	40	60	14.2	32	4.8	1.2	138	118
GN.38789	GN 114.3-16-70	16	18.7 +1	15.9	22	40	70	14.2	32	4.8	1.2	138	133
GN.78352	GN 114.3-16-80	16	18.7 +1	15.9	22	40	80	14.2	32	4.8	1.2	138	144
GN.78353	GN 114.3-16-90	16	18.7 +1	15.9	22	40	90	14.2	32	4.8	1.2	138	147
GN.78354	GN 114.3-16-100	16	18.7 +1	15.9	22	40	100	14.2	32	4.8	1.2	138	173
GN.78355	GN 114.3-16-110	16	18.7 +1	15.9	22	40	110	14.2	32	4.8	1.2	138	186
GN.78356	GN 114.3-16-120	16	18.7 +1	15.9	22	40	120	14.2	32	4.8	1.2	138	199
GN.78357	GN 114.3-16-130	16	18.7 +1	15.9	22	40	130	14.2	32	4.8	1.2	138	213
GN.78358	GN 114.3-16-140	16	18.7 +1	15.9	22	40	140	14.2	32	4.8	1.2	138	226
GN.78359	GN 114.3-16-150	16	18.7 +1	15.9	22	40	150	14.2	32	4.8	1.2	138	239



Indexing and positioning elements

- 1
- 2
- 3
- 4
- 5
- 6
- 7
- 8
- 9
- 10
- 11
- 12
- 13
- 14
- 15
- 16
- 17
- 18
- 19

Conversion Table			
1 mm = 0.039 inch			
d1			
mm	inch	mm	inch
6	0.24	12	0.47
8	0.31	16	0.63
10	0.39	20	0.78



INOX STAINLESS STEEL **METRIC**

Code	Description	d1 -0.1	d2	d3	d4	d5	l1 +0.4	l2	l3	a	b	Double sided shearing force [KN]	
GN.38849	GN 114.3-20-30	20	22.7 +1	19.8	22	40	30	14.8	33	4.8	1.2	228	125
GN.38850	GN 114.3-20-35	20	22.7 +1	19.8	22	40	35	14.8	33	4.8	1.2	228	136
GN.38851	GN 114.3-20-40	20	22.7 +1	19.8	22	40	40	14.8	33	4.8	1.2	228	147
GN.78361	GN 114.3-20-45	20	22.7 +1	19.8	22	40	45	14.8	33	4.8	1.2	228	158
GN.38853	GN 114.3-20-50	20	22.7 +1	19.8	22	40	50	14.8	33	4.8	1.2	228	169
GN.38855	GN 114.3-20-60	20	22.7 +1	19.8	22	40	60	14.8	33	4.8	1.2	228	191
GN.38856	GN 114.3-20-70	20	22.7 +1	19.8	22	40	70	14.8	33	4.8	1.2	228	214
GN.38857	GN 114.3-20-80	20	22.7 +1	19.8	22	40	80	14.8	33	4.8	1.2	228	234
GN.78362	GN 114.3-20-90	20	22.7 +1	19.8	22	40	90	14.8	33	4.8	1.2	228	258
GN.78363	GN 114.3-20-100	20	22.7 +1	19.8	22	40	100	14.8	33	4.8	1.2	228	277
GN.78364	GN 114.3-20-110	20	22.7 +1	19.8	22	40	110	14.8	33	4.8	1.2	228	302
GN.78365	GN 114.3-20-120	20	22.7 +1	19.8	22	40	120	14.8	33	4.8	1.2	228	326
GN.78366	GN 114.3-20-130	20	22.7 +1	19.8	22	40	130	14.8	33	4.8	1.2	228	350
GN.78367	GN 114.3-20-140	20	22.7 +1	19.8	22	40	140	14.8	33	4.8	1.2	228	368
GN.78368	GN 114.3-20-150	20	22.7 +1	19.8	22	40	150	14.8	33	4.8	1.2	228	395

Indexing and positioning elements